

William Lotz, P.E.
Chapter President 1969-1970

Bill was almost born in the front seat of his Mother's yellow LaSalle convertible as she was driving herself to the hospital. He has had a love affair with yellow convertibles ever since. He grew up in the Lotz Asbestos Company in Hartford, Conn. and worked thru high school and college installing asbestos insulation. The asbestos claimed his father in 1947. Bill had a yellow Buick convertible in high school. After the family business was liquidated, he formed "Lotz Service" and employed several of his high school buddies doing odd jobs. Bill took singing lessons and sang at all of the high school functions. In 1950, he entered the University of Miami Engineering School where he successfully lobbied the University to become the first integrated school in the South. His father had pioneered hiring and promoting blacks in the 1920's and Bill joined the NAACP in 1955 which was not a popular thing to do in Florida. He married a high school sweetheart, moved to a farm in Ohio and had Esther, Nelson, Seth, Valerie and adopted Heather and Pat. Bill published his first technical article in 1956 and has written 230 articles to date published in various engineering and construction journals as well as many newspapers. Bill and Barbara were divorced in 1969. Bill married Ann in 1970 and divorced in 1972. Bill entered his "wandering phase" and lived in Burlington, VT; Buffalo, NY; Kingston, Jamaica; Stamford, CT; Clinton, IA; Kansas City; Chicago; and Houston. During this phase, he rose to President of a

nuclear power plant construction company. During this wandering period, Bill met Jacquie in an art gallery in Iowa and they were married in 1974 in Kittery Point.

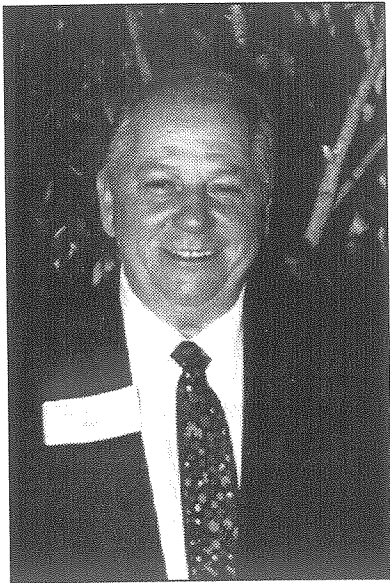
In 1976, they found a 50 acre farm in Acton, Maine and Bill started his own consulting engineering firm that does consulting nationwide - primarily on moisture (and other) problems in buildings.

They have goats, sheep, chickens and occasionally rabbits, pigs , and cows. They have 3 dogs, countless cats, and two sports cars - including a yellow convertible.

He has held several positions in the Maine Democratic Party. He has been active in the UU Psi Symposium and founded the Maine Chapter of ASHRAE in 1977. In 1988, Senator George Mitchell presented Bill with the Jack Howell's Award and in 1989 the University of Miami gave him the Distinguished Alumnus Award.

Bill has been involved with ASHRAE since 1957 and is one of only a few that hold the honor as an ASHRAE Fellow. He has done some post graduate study at the Ohio State University and is a registered professional engineer in 8 states.

Bill found inner peace and perspective in his life in 1985 in a near death experience and subsequent 45 days in the hospital. In 1946, he was sent home from school for laughing too much - it didn't help because laughing and making others laugh has been his avocation ever since.



Robert Miller
Chapter President 1970-1971

Bob was born August 9, 1935 in Rutland, Vermont, and graduated from the Rutland Public Schools.

His early working life started with Stelling Eordwood Associates in Hartford. In 1965, Bob started his Burlington career with Jennison, Freeman French Freeman and then was a partner at Vermont Heating and Ventilating. In 1972, he formed his own company New England Air Systems, Inc. After many successful years, he sold this company to the employees and finally in 1983 formed REM, Inc., a very successful real estate development company which he still operates today.

Bob is married to Holly Miller and has two children, Tim and Stephanie, from a previous marriage.

Time, treasure and talent are Bob Miller's belief and motto. To this end, he serves on many local boards including the King St. Youth Center and Chamber of Commerce.



Richard Bowler, Jr. P.E.
Chapter President 1971-1972

Our third president, Dick Bowler Jr. was born April 7, 1925 in Northampton, Massachusetts. A few years later his family moved to Laconia, NH where his dad started Bowler Motor Sales, a Lincoln/Ford dealership. Laconia was where Dick learned to tie his shoes, ride a scooter down the three story circular ramp of his dad's dealership garage, later learning to ride a bicycle and swim in nearby Lake Winnisquam. This semi-urban lifestyle ended with the rash of the Great Depressxion of the early 1930's and the family with Dick and younger sister, "Murray" moved to the asphalt jungle of Boston for a year and then to a new home, in Marblehead, Massachusetts at the ripe of age of seven.

Marblehead, the birthplace of the U.S. Navy and reputed yachting center of the world lured Dick to the world of sailing where he spent a good time of his youth through high school attached to various sailboats and crewing in larger hulls.

Living and going to school in his new hometown was filled with many memories of the typical American experiences of life leading to the early 1940's. With the advent of world turmoil increasing and upon war being declared a whole new uninvited lifestyle began it's sordid influence. Little did anyone really know.

(Richard Bowler, Jr. P.E., cont.)

Dick enlisted in the Air Corp early in 1943 to pursue aerial navigation a choice influenced by his high school courses of marine navigation. His military career ended as a German prisoner of war after serving as Deputy Lead Navigator for the famed Hells Angels 303rd 8th Air Force B-17 Bomb Group in the European theater.

He is a graduate of Wentworth Institute, Architectural Engineering; University of Massachusetts and graduate work at M.I.T.; worked for a year for General Electric Company Aircraft Gas Turbine Division; for a year with Aetna Fire Group Engineering Division; Thirteen years with the then called Johnson Service Company. He came to Vermont in 1964 as an associate with Jennison Engineering Company and later started a field engineering business in the HVAC industry covering all aspects of HVAC field engineering service. His daughter Caryl is a legal law firm manager in Ipswich, Massachusetts; older son Wayne is manager of a large HVAC Supply Company in Lowell Mass. and sons John and Ken both key managers work with Dick at Northeast Industries in Williston.

Dick is a former and present member of ASHRAE; is a member of Vermont Society of Professional Engineers and National Society of Professional Engineers. He often recalls the many early years of the ASHRAE CVC activities and growth with the support of many local interested members. There are a lot of wonderful memories of the annual ASHRAE summer outing and picnics at the Bowler homestead in Jericho. After all, the local chapter is the only common link to a type of profession that claims the greatest innovation of all engineering disciplines.

Dick resides in Burlington with his wife Cathy. Stepdaughter Pam is co-owner of a residential/commerical maintenance business in Essex Junction, stepsons - Bruce is recovering from knee surgery and Mark is chief Mechanical Engineer for Polhemus Laboratories of Colchester, Vermont.



Robert Coughlin
Chapter President 1972-1973

Bob was born in Youngstown, Ohio the sixth of twelve children. In 1930, Bob moved with his family to Midland, Pennsylvania where he spent most of his adolescent life successfully competing in football and baseball, and winning many awards.

Bob attended Youngstown College where he majored in mathematics and competed in baseball and football. He later enlisted in the U.S. Navy in 1943 and was discharged later in 1946. While in the Navy he was trained as a radio technician and served on the USS LST 552 in the Pacific.

His HVAC career began in 1946 with Drying Systems, a commerical and industrial design and installation contractor. He worked his way up through the ranks from detailer to shop foreman of the refrigeration department fabricating and servicing air to air heat pumps.

In 1956, Bob joined IBM starting as a Laboratory Tech Specialist. He later transferred to the Facilities Engineering Department where he was much involved in the Design, Build, Start-up and operation of the T.J.Watson Research Center in Yorktown Heights, N.Y. He also designed and built cleanrooms for IBM Fishkill and IBM Essex.

(Robert Coughlin, cont.)

While in Burlington, Bob was appointed Energy Coordinator for the Burlington site and developed significant energy savings strategies. He later transferred to Boca Raton for the corporate energy program and was project leader on 4 sites and provided technical support on many others. He eventually retired from IBM in 1987.

For a brief period, Bob joined the Brady and Anglin Consulting Engineers and participated in client planning meetings, in-house design, construction inspection and building start-ups. He became fully retired in 1989.

Bob is still an active and distinguished member of ASHRAE. He is a life member who has been very active. Some of the accomplishments and awards over his rich career are:

Board member of Burlington, Gold Coast and Atlanta chapters.

1981-84, Chairman of TC9.7 Test and Balance

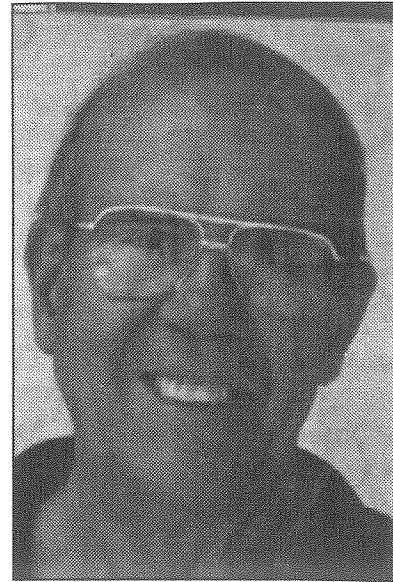
1984-85, 1989-90 Chairman of Admissions and Advancement Committee

1978-81 RVC Region IV Energy Conservation

1980 Atlanta Chapter Engineer of the Year

Regional Award of Merit and Distinguished Service.

Has presented 4 papers at ASHRAE Society Meetings.



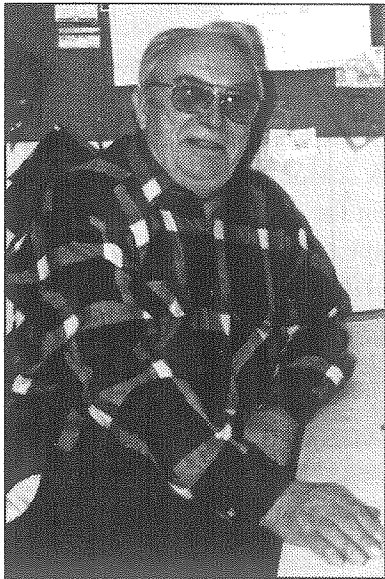
Don Johnson
Chapter President 1973-1974

Don was born February 13, 1929 in Perry, Oklahoma and graduated from high school in 1947.

He began his career in the gas industry in New Mexico selling and servicing in the propane business. He then went to New Jersey and later to upstate New York. In 1962 he became sales manager for a new natural gas utility in Northern New York State (St. Lawrence Gas) and in 1965 moved to Vermont to the beginning of Vermont Gas Systems. He believes that he is one of very few that have had the experience of starting two new gas utilities.

He held various positions with Vermont Gas over the 24 years of employment and retired in 1989 as Sr. Vice President in charge of Operations.

He now lives with his wife Lill in Port Charlotte, Florida and enjoys golf and fishing. They live on Charlotte harbor and some of the world's best fishing is only minutes away. Lill continues to be active in "Little Theatre" as she was in Vermont. Their son, Chuck, is in Vermont working in the HVAC industry and their grandsons have plans to enter Clarkson College this fall and perhaps will also have a career in HVAC.



Gordon W. Root, Sr. P.E.

Chapter President 1974-1975

Gordie was born on October 6, 1921 and attended the University of Massachusetts where he received his BSME. He currently lives in Shelburne with his wife Lois and has 5 children; Alan, Judy, Rosemary, Earl and Bill.

Gordie's career spans over 45 years in the HVAC/R industry working as a mechanical engineer for such companies as Alderman and McNeash, Jennison Engineering, Vt Heating & Ventilating, and Wiemann Lamphere. For the last nine years, Gordie has been working in private practice as president and principal of GWR Engineering a consulting engineering firm in Shelburne, Vermont.

Gordie joined ASHRAE in 1969 as one of the Champlain Valley Chapter charter members. He has been a very active chapter member, holding every office except for Treasurer, and is one of its more prolific members. Gordie has also held positions and has worked on committees at the Regional and Society levels. This is Gordie's third year on the Society Historical Committee and is his eighth year as Region I Historian. He has also served on the Nominating and Handbook committees and on the Publishing Council. Gordie is also one of the few ASHRAE Fellow members.



Jack Couture P.E.

Chapter President 1975-1976

Jack was born in 1919 and learned of ASHRAE in the late forties while he was working as an electrical engineer with Ned Jennison who had recently started Jennison Engineering. At that time most mechanical/electrical design work for building construction was sent out of the state to Boston or New York.

In the fifties, Jack went to work for Freeman, French, Freeman and in 1969 formed his own consulting engineering firm called Couture Engineering. One of the firm's projects was the original IBM building in Essex Junction.

In 1978, Jack left Vermont for San Diego, California due to recurring asthma difficulties, where he worked as an independent consulting engineer for many local architectural and engineering firms in the area.

In 1989, Jack decided to retire at the age of 70 years old and to keep him busy decided to research the work of Nikola Tesla, the pioneer of the first A.C. electric utility system in this country. Since then his research has resulted in authoring three books on Tesla coil and engineering design and construction. He also keeps busy with his photography hobby and is an avid outdoorsman.



Giustino N. Mastro, P.E.
Chapter President 1976-1977

Gus began his career in the Engineering field in 1956 when he worked with the General Electric Company in Schenectady, New York in their Large Steam Turbine and Generator Department. After graduating from their Apprentice Machinist Program, he attended the University of Vermont, UVM, graduating with a Bachelor of Science Degree in Mechanical Engineering in 1966. Upon graduation, Mr. Mastro accepted the position of Chief Engineer with a local consulting engineering firm.

Having a deep desire to teach at the College level, Gus returned to the UVM after a years work and began his Master of Science program while simultaneously teaching Thermodynamics and Heat Transfer. In 1969, he earned his MSME degree and went on to teach one more year at the University. He was Co-author of "The Engineering Problem of Ski Safety," published in the Journal of Biomechanics.

The next thirteen years were spent employed as an Engineering Consultant initially and worked his way to Assistant Chief Engineering Consultant in the Division of State Buildings in Montpelier, VT. Gus was responsible for the project management, research and designing of heating, ventilation and air conditioning systems, new construction and major renovations, central heating plant renovations (high pressure boiler

replacement), electrical power distribution on State property, sewer and water systems, including on-site disposal systems. His work also took him to the preparation of specifications and plans for a variety of projects. A major milestone in his accomplishments was working for the approval of a multi-million dollar construction and renovation to the Vermont State's Veteran's Home through the Federal Government Veteran's Administration in Washington.

Gus is registered as a Professional Engineer in the State of Vermont, New York, New Hampshire, and Massachusetts. He has been an Associate member of ASME for thirteen years.

His affiliation as an ASHRAE member extends over twenty years, both at the Chapter as well as Society levels. He has held the offices of Secretary and President of the Champlain Valley Chapter; was Treasurer of CRC 1986 Host Chapter Meeting. He has also held membership on Chapter Board of Governors for several years, Chair of Program and Refrigeration Committees. Most recently, he has been a member at the Society level of the Handbook Committee for the 1991 Application Volume, and currently the 1994 Refrigeration Volume and presently on ASHRAE's Technical Committee TC-10.9.

Presently Gus holds the position of Associate Director of Physical Plant with University of Vermont., where he has been employed for the last twelve years. He is responsible for all of the facility trades personnel, Central Heating Plant operation, Energy Management and Facilities Audit, Energy Conservation Programs, and the asbestos/lead management program.

Gus and his wife Mary live in Essex Center, Vermont; have two children, Joe and Mary Jo, and as Gus puts it - It's a million dollar combination. Both children graduated from UVM in May, 1994. Joe works for Hallam Associates in Burlington, VT as a mechanical engineer. Mary Jo is applying to graduate school in clinical psychology/social work; she presently works for Howard Mental Health Services as a case worker.



Neil Vallencourt. P.E.
Chapter President 1977-1978

Neil moved to Waterbury in 1975, after working for 6 years in the Boston area, to start AVENGCO in the corner of his living room. After starving for the first 6 months, work came more regularly, and he was able to move into the chicken coop. Eventually AVENGCO ended up at 83 South Main Street in Waterbury.

It was here in Vermont where guys like Gordie Root showed him that the Society was made up of working people like us. He was encouraged to participate in Chapter activities, and after the first year, due to some holes in the succession to the throne, found himself as Vice President and President the following year.

During the 1977 -1978 year the chapter's efforts were rewarded with the Presidential Award of Excellence. Over the years, Neil has served on many Chapter committees and as Region I Vice Chairman of Education for 3 years, and the ASHRAE Journal Committee for 2 years. In 1988, he received the Regional Award of Merit.

Neil enjoys hunting, fishing, skeet shooting, his sons, and skiing. He frequently travels with his wife Lisa to his condo in Florida where he enjoys boating and scuba diving.



William Moore. P.E.
Chapter President 1978-1979

Bill graduated from the University of Vermont in 1974 with a Bachelor of Science in Mechanical Engineering.

His HVAC/R career began working for Hertzberg Consulting Engineers from 1975 to 1977 and then for Jennison Engineering from 1977 to 1978.

He joined IBM in February of 1978 and has worked in the IBM facilities group since then. He is presently a staff engineer in charge of the High Temperature Hot Water System and the Site Compressed Air System.